



**House & Land Package**

From **\$981,619\***

**Mountain Views 245**

4 2.5 2

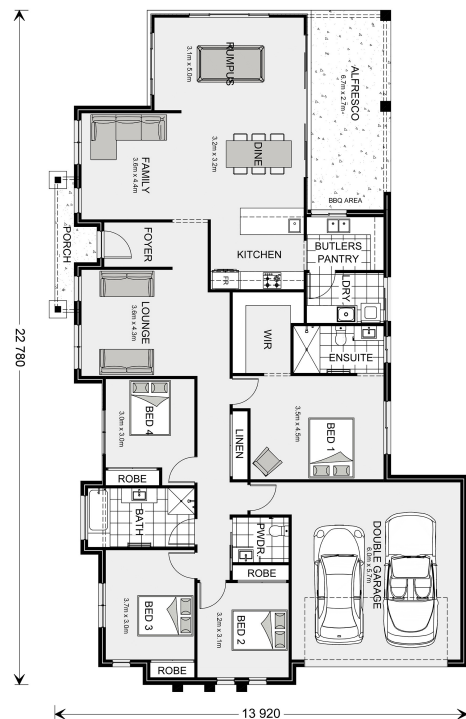
**230 Coachwood Drive, Lake Albert**

Land Area: 1529 m<sup>2</sup>

Contact **Gemma Webster** on 0438515163

**Inclusions:**

- + Fixed price building contract
- + Double glazed sliding doors and awning windows
- + 900mm Smeg appliances
- + Butlers pantry with sink and laminated shelving
- + Corner block design
- + Personalised colour appointment



\* Price listed is indicative only and does not include stamp duty, legal fees or conveyancing costs. Images may depict optional upgrades including fixtures, fencing, landscaping, features, facades, finishes and/or other items which are not included in the stated price. Further information overleaf. For further information, please talk to a New Homes Consultant or visit our website at <https://www.gjgardner.com.au/house-and-land-pricing>.

