



House & Land Package

From **\$703,985***

Benowa 210

3 2 2

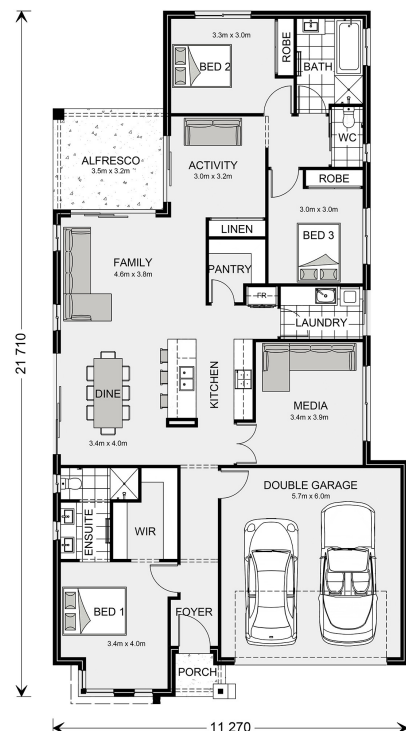
11 Terrapee St, Strathfieldsaye

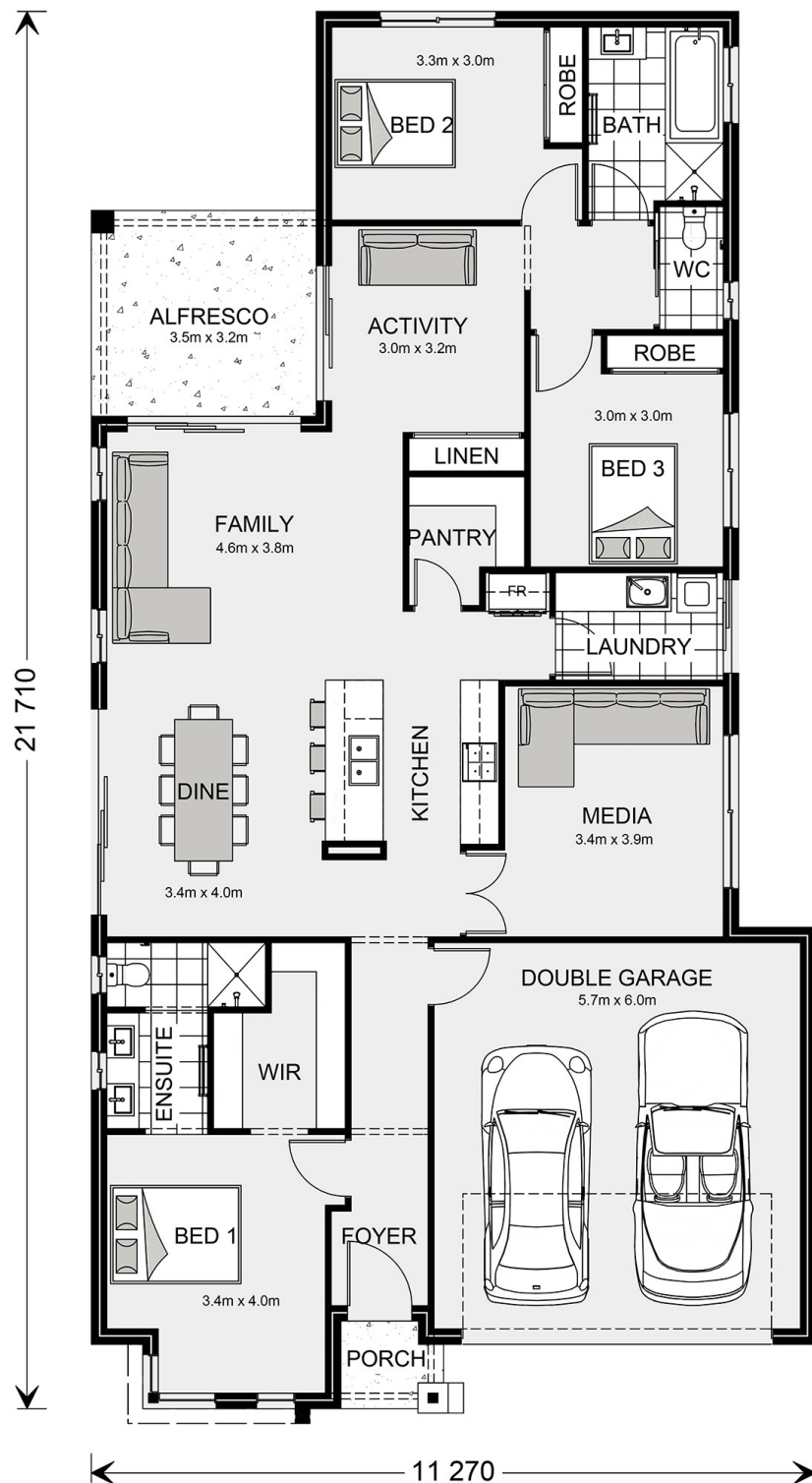
Land Area: 412 m²

Contact **Justin Walsh** on **0408 556 085**

Inclusions:

- + All floor coverings
- + Heating & Cooling
- + Site allowance
- + Exposed aggregate concrete allowance
- + Double glazing to all windows & glass sliding doors
- + Subject to planning approval





* Package price is based on Benowa 210 standard floor plan and standard façade (may be smaller than façade shown). Package may be subject to developer's design review panel, council final approval and G.J. Gardner Homes procedure of purchase. Package price excludes stamp duty on land, legal fees and conveyancing costs (including 6 Legal/74189757_2 transfer of title and searches). Prices are current as of July 27, 2024 and are inclusive of GST. Prices may change without notice. Packages are subject to availability. Package subject to two separate contracts relating to the building and the land respectively. Photographs may depict fixtures, finishes and features not supplied by G.J. Gardner Homes. Excluded items may include but are not limited to landscaping items such as planter boxes, retaining walls, water features, pergolas, screens, driveways and decorative items such as fencing and outdoor kitchens or barbeques. Photographs may also depict inclusions not forming part of the standard design and which may be subject to additional costs. This design and illustration remains the property of G.J. Gardner Homes and may not be reproduced in whole or in part without written consent. For detailed home pricing, please talk to a New Homes Consultant or visit our website at <https://www.gjgardner.com.au/house-and-land-pricing>. Bendigo Urban Investments Pty Ltd trading as G.J. Gardner Homes - Bendigo. Builders License CDB-U58150.