



House & Land Package

From **\$1,800,000***

Kingscliff 354

4 Beds • 2.5 Baths • 2 Car Spaces

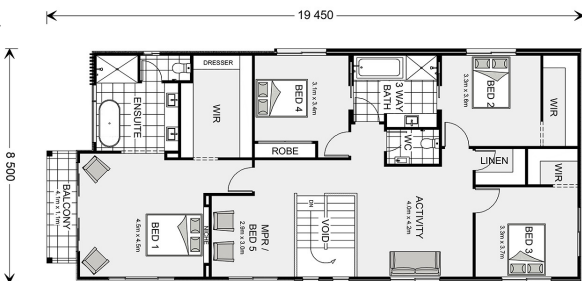
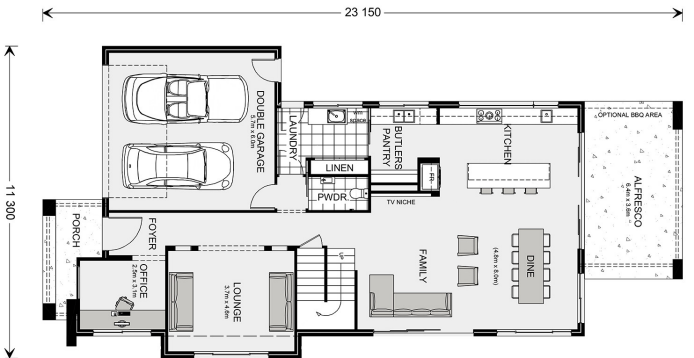
4. House and Land Package, Reservoir

Land Area: 631 m²

Contact **Kirrily Perryman** on 0408 411 491

Inclusions:

- + Heating and Cooling
- + 900mm Appliances
- + 7 Star Energy Rating
- + Double Glazed Windows



* Price listed is indicative only and does not include stamp duty, legal fees or conveyancing costs. Images may depict optional upgrades including fixtures, fencing, landscaping, features, facades, finishes and/or other items which are not included in the stated price. Further information overleaf. For further information, please talk to a New Homes Consultant or visit our website at <https://www.gjgardner.com.au/house-and-land-pricing>.

