



House & Land Package

From **\$1,592,995***

Elanora 268

4 | 2.5 | 2

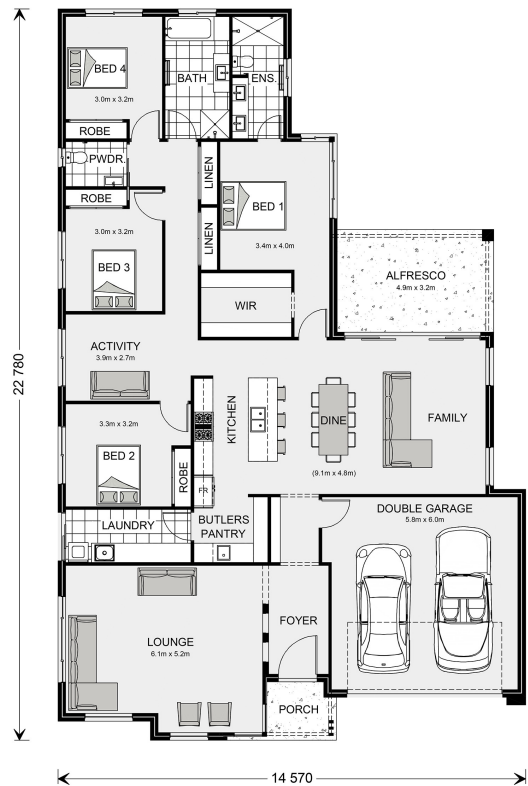
22 Longboard Avenue, Torquay

Land Area: 563 m²

Contact **Ron Mortimer** on 0423 233 688

Inclusions:

- + Garage & Living on the same side
- + Provisional site costs
- + Colorbond roof
- + Double Glazing throughout
- + Floor coverings allowance



* Price listed is indicative only and does not include stamp duty, legal fees or conveyancing costs. Images may depict optional upgrades including fixtures, fencing, landscaping, features, facades, finishes and/or other items which are not included in the stated price. Further information overleaf. For further information, please talk to a New Homes Consultant or visit our website at <https://www.gjgardner.com.au/house-and-land-pricing>.

