



House & Land Package

From **\$735,951***

Benowa 210

3  2  2 

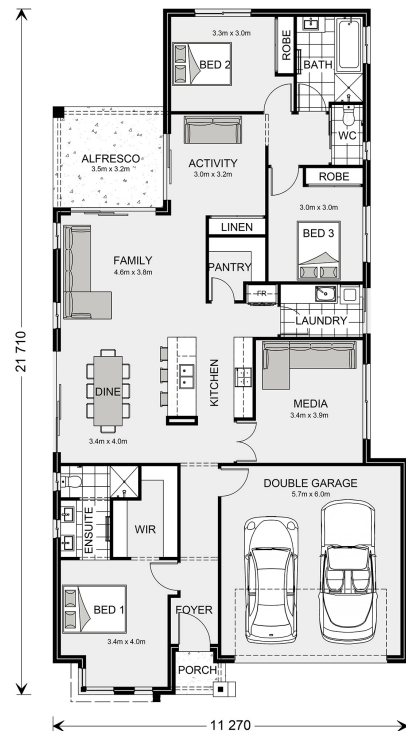
? **Rivergum Estate Armstrong Dr, Barham**

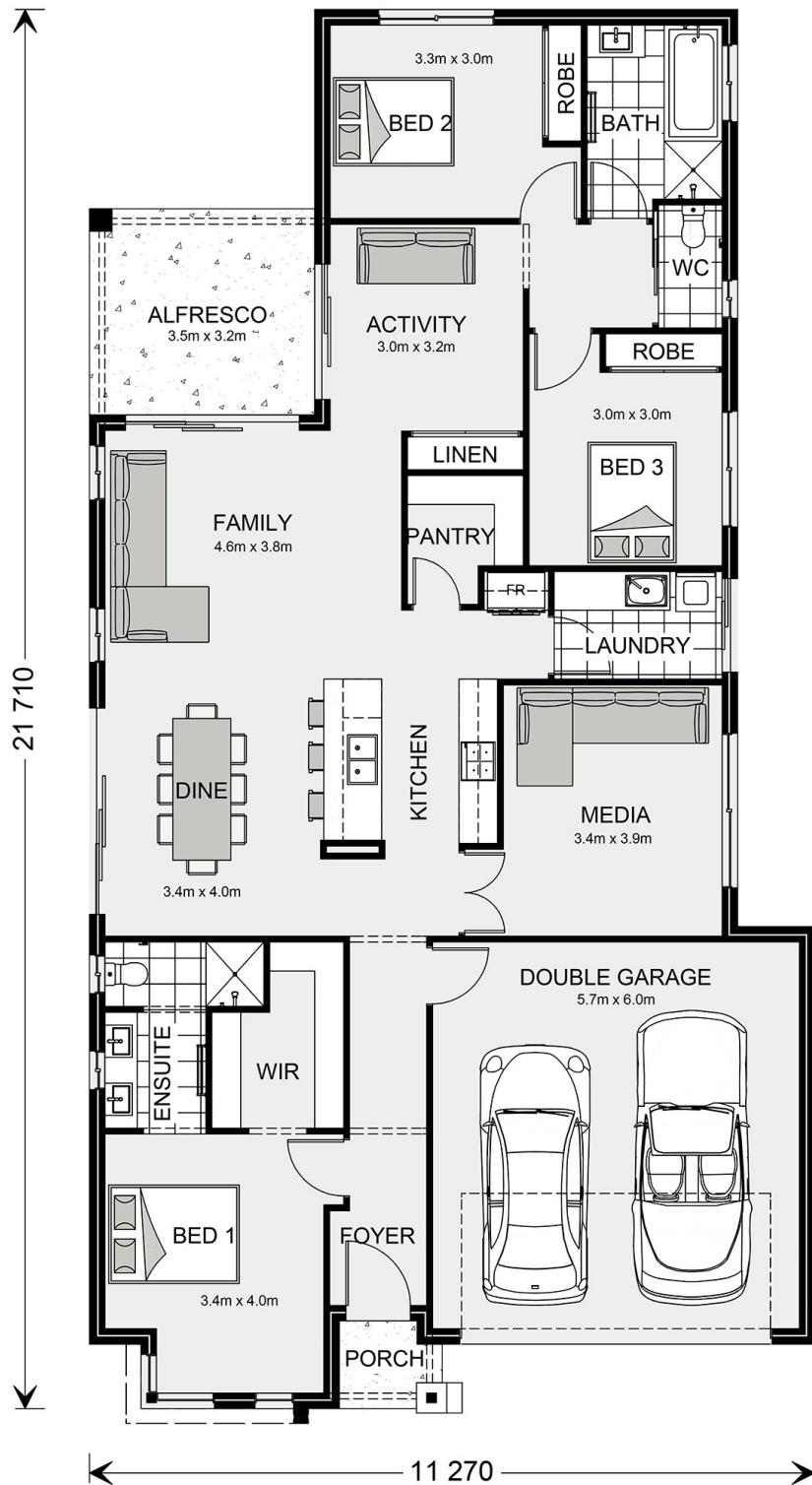
Land Area: 1090 m²

Contact **Jo Sheldrick-Doherty** on **0428 340 533**

Inclusions:

- + Fixed price contract once site costs and energy rating requirements are confirmed
- + Classic Streetscape with Colorbond roof, or design of your choice
- + Customised Fujitsu Ducted Zoned A/C
- + H2D Site upgrade included
- + Driveway pad and 900 concrete path around house
- + Double glazed windows





* Package price is based on Benowa 210 standard floor plan and standard façade (may be smaller than façade shown). Package may be subject to developer's design review panel, council final approval and G.J. Gardner Homes procedure of purchase. Package price excludes stamp duty on land, legal fees and conveyancing costs (including 6 Legal/74189757_2 transfer of title and searches). Prices are current as of January 14, 2025 and are inclusive of GST. Prices may change without notice. Packages are subject to availability. Package subject to two separate contracts relating to the building and the land respectively. Photographs may depict fixtures, finishes and features not supplied by G.J Gardner Homes. Excluded items may include but are not limited to landscaping items such as planter boxes, retaining walls, water features, pergolas, screens, driveways and decorative items such as fencing and outdoor kitchens or barbecues. Photographs may also depict inclusions not forming part of the standard design and which may be subject to additional costs. This design and illustration remains the property of G.J Gardner Homes and may not be reproduced in whole or in part without written consent. For detailed home pricing, please talk to a New Homes Consultant or visit our website at <https://www.gjgardner.com.au/house-and-land-pricing>. Hinton Building Pty Ltd trading as G.J. Gardner Homes - Swan Hill. Builders License CDB-U48589.